

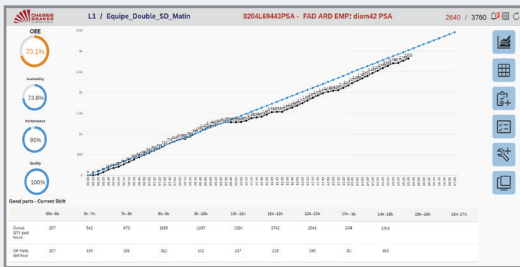


Improve your industrial processes performance with Sprint2Manuf™

WHY?

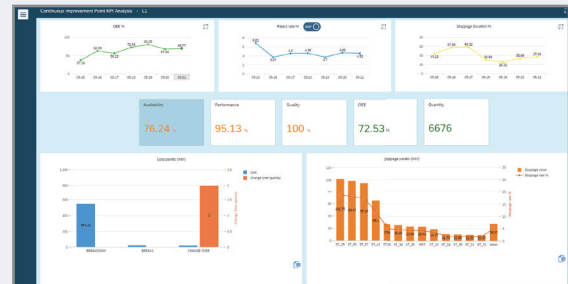
1. Drive your production routing more closely
2. Give transparency to your employees and customers at the same time
3. Identify pain points immediately through plant KPIs
4. Track finished products and components on the flow
5. Receive real-time alerting from your production line and react accordingly

SOLUTION OVERVIEW



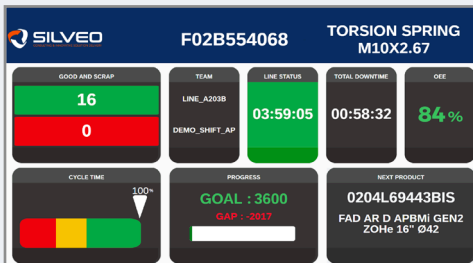
Global Production Dashboard

Control your production real-time, display planned and unplanned events. You can also track changes and comments during (or after) the shift, check your stoppages categorization and notify the maintenance team for intervention.



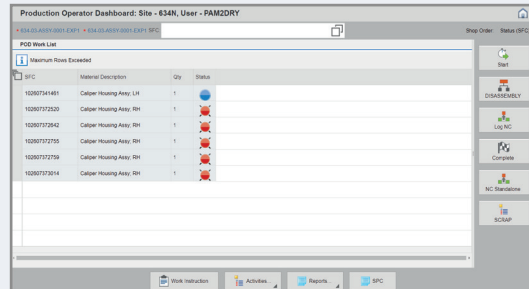
Reporting

Manage analysis of your production whatever the time lapse you want to look at. This screen allows to display indicators such as rejects, breakdown/training/maintenance times, stoppage reasons ranked by occurrence, machines availability, line performance, quality, produced quantity.



Andon Screen

Take control on your performance. Check the speed on your lines and give feedback to operators on their work, ability to reach the goal and remaining parts to produce. Give information to your team enabling to anticipate and take the right action.



Operator Dashboard

Take decision on each serial number, with strong SAP experience on industrial processes, the solution helps your team to control quality, record non-conformance and declare report incidents.

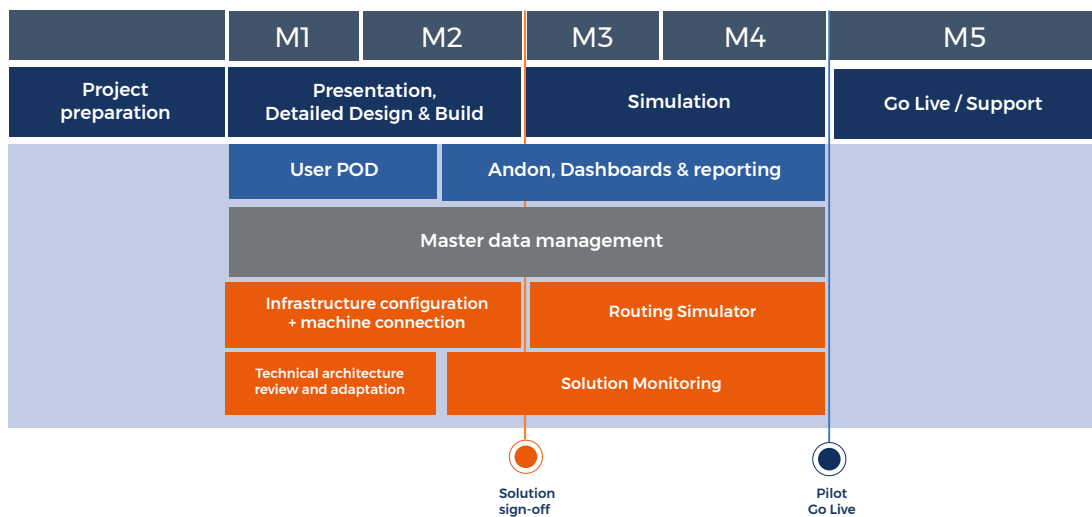
SOLUTION SCOPE

SAP ME / MII Manufacturing best practices for industries	Performance analysis Customized fast indicators to analyze your availability, performance and quality results	Master data synchronization with SAP ERP Work centers, Materials, BoM, routings, cycle times, planned order sequencing	Production line Simulation Tool to simulate your production throughput at defined pace and cycle time based on material routing	Active process and system monitoring 1 common tool to supervise networks, servers, databases and machines data exchange	Project toolkit Project documentation toolkit & methodology
--	---	--	---	---	---

OPERATIONAL GAINS

 Improve your performance analysis	 Use product genealogy to ease potential recall	 Drive and supervise lines & machines
 Identify theoretical and real-time Bottleneck	 Eradicate time for manual indicators calculation	 Empower Continuous Improvement with downtimes ranked by occurrence
 Reduce time for reacting to unplanned events	 Help business to check respect of the scheduled task	 Define and display production objectives for common KPIs

IMPLEMENTATION / GOLDEN RULES



- Clear Master data preparation is a key success in your MES project
- Machine connection requires time and strong automation expertise
- Decisions on screening representations are made at Core Model level
- Simulation time is required to deeply test and appropriate the solution
- Test as soon as possible (with real manufacturing conditions)
- Functionalities to activate can be decided at site (factory) level

 **23 weeks implementation for Pilot line**

 **12 weeks per roll-out per additional site**



Romain **DURANDO**
Business Development Director & Partner
+33 (0)6 25 53 03 82
romain.durando@silveo.com

SILVEO is a consulting company dedicated on IT Supply Chain & Manufacturing projects for industrial customers. We assist our clients in facing their challenges, with end-to-end solutions from strategic planning to execution.